

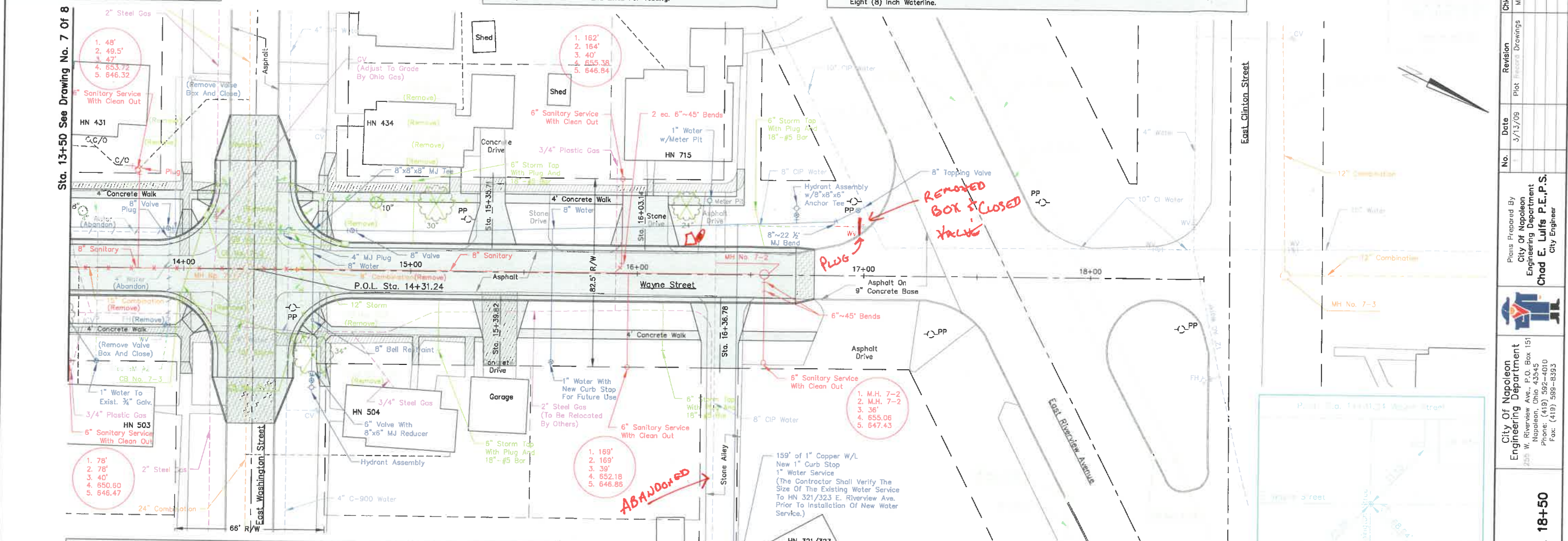
1-2-18 C.E.L.

Note: All Six (6) inch Sanitary Taps Serving Residences On The West Side Of Wayne Street Shall Be Installed Below The Proposed Eight (8) inch Waterline And Existing Twelve (12) inch Storm Sewer.

Note: All Six (6) inch Storm Taps Shall Be Connected To The Six (6) inch HDPE Underdrains With A Six (6) inch Tee.

Note: The Contractor Shall Provide An Adequate Number Of Blowoffs On The Proposed Eight (8) inch Waterline. The Minimum Size For Blowoffs Is Two (2) Inches. Joints At The Ends Of Lines Shall Be Restrained As Per Requirements For Dead End Lines For Testing.

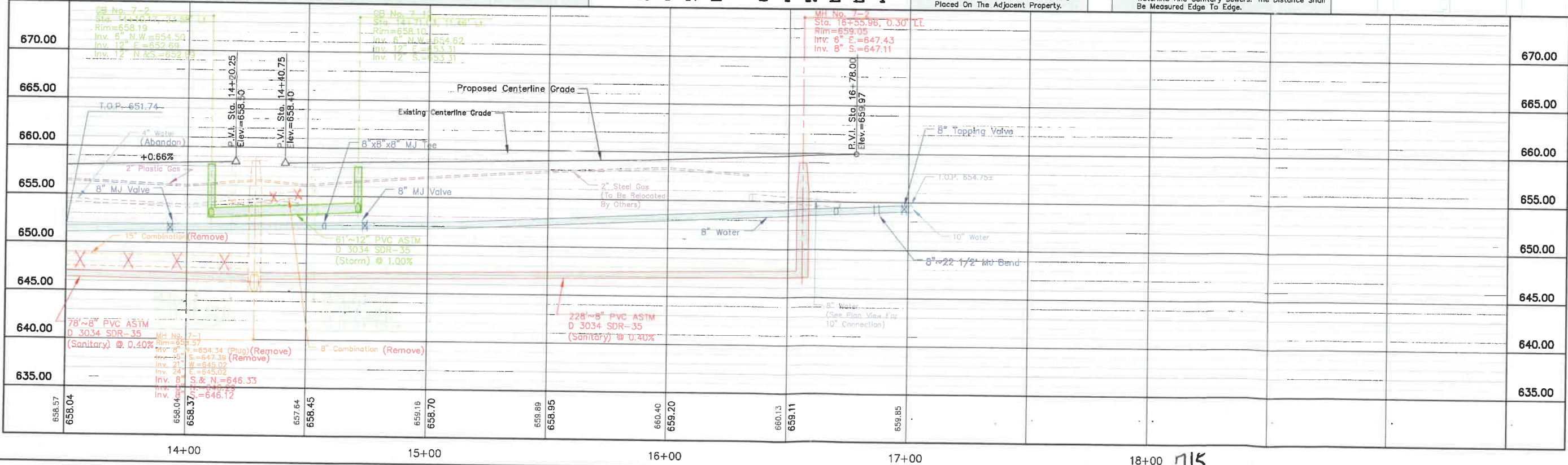
Note: The Proposed Eight (8) inch Waterline Shall Be Constructed From E. Riverview Avenue To E. Main Street. The Existing Four (4) inch And Eight (8) inch Waterlines Shall Remain In Service Until The Proposed Eight (8) inch Waterline Has Passed All Testing And All Water Services Have Been Connected To The Proposed Eight (8) inch Waterline.



Note: The City Of Napoleon's Operations Department Will Dye Test Each Sanitary Lead To Verify That It Is The Sanitary Lead And That No Inflow Is Getting Into The System. Sanitary Leads Shall Be Connected To The Main When They Are Encountered (No Temporary Service Connections). The Sanitary Main Shall Remain In Service At All Times.

Note: Any Landscaping Materials On The R/W That May Be Disturbed During Construction Shall Be Removed And Placed On The Adjacent Property.

Note: When Crossing Sanitary Sewers, Maintain Eighteen (18) Inches Vertical Separation Between The Waterline And Sanitary Sewers. The Distance Shall Be Measured Edge To Edge.



Chkd. By	M.B.S.
Revision	Plot Record Drawings
Date	3/13/09
No.	
Plans Prepared By	City of Napoleon Engineering Department
	Chad E. Lulfs P.E., P.S. City Engineer
	City of Napoleon Engineering Department 205 W. Riverview Ave., P.O. Box 151 Napoleon, Ohio 43545 Phone: (419) 592-4010 Fax: (419) 598-8393

Contract No. 02-06
Wayne Street Reconstruction
Plan And Profile Sta. 13+50 To Sta. 18+50

Created:	2/15/08	Plotted:	12/15/15	Scale:	1"=20'
Drawn:	Mark B. Sless	Approved:	Chad E. Lulfs		
Drawing Name:	2008 Wayne 08 Plan and Profile B.dwg				